

Original Research Paper

***Crataegus monogyna* fruit aqueous extract as a protective agent against doxorubicin-induced reproductive toxicity in male rats**

Ali Shalizar Jalali^{1*}, Shapour Hasanzadeh

Abstract

Objective: Doxorubicin (DOX) is a broad spectrum chemotherapeutic agent used in the treatment of several malignancies. The use of DOX in clinical chemotherapy has been restricted due to its diverse toxicities, including reproductive toxicity. *Crataegus monogyna* (*C. monogyna*) is one of the oldest medicinal plants that have been shown to be cytoprotective because of scavenging free radicals. The present study was undertaken to determine whether *C. monogyna* fruits aqueous extract could serve as a protective agent against reproductive toxicity during DOX treatment in a rat model through antioxidant-mediated mechanisms.

Materials and Methods: Male Wistar rats were allocated to four groups. Two groups of rats were treated with DOX at a dose of 4 mg/kg intraperitoneally on days 1, 7, 14, 21, and 28 (accumulated dose of 20 mg/kg). One of the groups received *C. monogyna* fruits aqueous extract at a dose of 20 mg/kg per day orally for 28 days along with DOX. A vehicle-treated control group and a *C. monogyna* control group were also included.

Results: The DOX-treated group showed significant decreases in the body and organ weights and spermatogenic activities as well as many histological alterations. DOX treatment also caused a significant decrease in sperm count and motility with an increase in dead and abnormal sperms. Moreover, significant decrease in serum levels of testosterone and increased serum concentrations of FSH, LH, LDH, CPK, and SGOT were observed in DOX-treated rats. Notably, *Crataegus* co-administration caused a partial recovery in above-mentioned parameters.

Conclusion: These findings indicated that doxorubicin can adversely damage the testicular tissue, while *Crataegus* co-administration could effectively prevent these adverse effects by effectively inhibiting oxidative processes and restoration of antioxidant defense system.

Keywords: *Crataegus monogyna*, Doxorubicin, Reproductive Toxicity

1- Department of Basic Sciences, Faculty of Veterinary Medicine, Urmia University, Urmia, I. R. Iran

*Corresponding author: Tel: +989111166004; Fax: +984412771926

Email: a.shalizar@urmia.ac.ir

Introduction

Doxorubicin (DOX), an anthracycline antibiotic isolated from the soil fungus *Streptomyces peucetius caesius*, is one of the most used anticancer drugs (Yeh *et al.*, 2007a). It is recognized to be effective against many chemo-responsive tumors such as ovarian cancers, breast cancers, and lymphomas (Atessahin *et al.*, 2006a). Nonetheless, DOX is responsible for a wide range of adverse effects including reproductive toxicity in humans and experimental animals (Bechter *et al.*, 1987; Damani *et al.*, 2002). It has been shown that even a low dose of DOX (1 mg/kg b.w.) given to adult mice is able to target testicular germ cells, mainly A1-A4 spermatogonia, leading to seminiferous epithelium depletion (Lu and Meistrich, 1979).

Moreover, it can also harm type B spermatogonia (Jahnukainen *et al.*, 2000) and primary spermatocytes (Lu and Meistrich, 1979), induce germ cell apoptosis in testis (Hou *et al.*, 2005), affect testicular lipids (Zanetti *et al.*, 2007), and result in testicular failure eventually (Hacker-Klom *et al.*, 1986). Furthermore, it has been reported that DOX causes decrease in weight of reproductive organs (Kang *et al.*, 2002) and reduction of sperms concentration (Kato *et al.*, 2001) and motility (Prahalthan *et al.*, 2005a). Although, the precise biochemical mechanism by which DOX causes testicular toxicity is still unclear, recent studies have suggested that DOX-induced organopathy involves the generation of reactive oxygen species (ROS), including $O_2^{\cdot-}$, $\cdot OH$, and H_2O_2 , which result in membrane and macromolecule damage by lipid peroxidation, DNA fragmentation, and protein oxidation (Xu *et al.*, 2001; Quiles *et al.*, 2002; Prahalthan *et al.*, 2005b). Therefore, DNA of rapidly dividing cells such as the testicular germ cells can be the preferential target of DOX. The drug intercalates within DNA strands causing cell

cycle blockage in the G₂ phase, single-strand breaks, and inhibition of the activity of some nuclear proteins, such as DNA and RNA-polymerase and DNA-topoisomerase II (Konopa, 1988; Speth *et al.*, 1988). Furthermore, mammalian spermatozoa are particularly vulnerable to oxidative damage because of high concentration of polyunsaturated fatty acids and low antioxidant capacity (Vernet *et al.*, 2004). Based on this concept, combination of the drug delivery together with potent and safe antioxidant may be the appropriate approach to ameliorate DOX-induced reproductive toxicity.

Hawthorn (*Crataegus*), found in northern temperate regions such as East Asia, Europe, and Eastern North America, is a genus of the Rosaceae family. The two most commonly used species are *Crataegus laevigata* (syn *Crataegus oxyacantha*) and *Crataegus monogyna*. Hawthorn was first mentioned as a drug in the Tang-Ben-Cao (659 A.D.), which is the world's earliest officially published pharmacopoeia (Yao *et al.*, 2008). Independent studies have shown that extracts of *Crataegus* (from several parts of the plant including fruits) are rich in proanthocyanidins and flavonoids (Bahorun *et al.*, 1996; Ljubuncic *et al.*, 2005) and many of these phenolic compounds have been shown to be cytoprotective by scavenging superoxide anion, hydroxyl radical, hydrogen peroxides, and reducing lipid peroxidation (Bahorun *et al.*, 1994; Zhang *et al.*, 2001; Rice-Evans, 2004). In view of this, since the DOX-induced reproductive toxicity is linked to oxidative stress, the present study was undertaken to assess the possible protective effect of *C. monogyna* fruits aqueous extract with antioxidant properties against reproductive toxicity during DOX treatment in a rat model.

Materials and Methods

Protective effects of *C. monogyna* on reproductive toxicity in male rats

Plant material

The ripe fruits of *C. monogyna* were collected from its natural habitat around the city of Urmia in West Azerbaijan province, northwestern Iran. A dried voucher specimen was deposited at the Herbarium of the Botany Department, Faculty of Science, Urmia University under number 7031.

Preparation of the aqueous extract

After collection, the fruits were dried for 7–10 days in the shade at room temperature. Dried fruits were then ground and the powder was stored in cloth bags at 5 °C until transfer to the laboratory for extraction. The method for preparing dry water-soluble plant powders has been previously described (Ljubuncic et al., 2005). Briefly, dried plant material (25 g) was stirred in 250 mL of distilled water for 15 minutes at 100 °C, followed by rapid filtration through a crude cellulose filter and then Whatman #1 filter paper. The resulting filtrate was freeze-dried and the powder was stored at –18 °C in a desiccant until required. The average (w/w) yield was 12.4 %.

Animal model

Adult sexually matured male (4 months of age weighing 176.70±6.23 g) albino rats of Wistar strain were obtained from Animal Resources Center of Veterinary Faculty of Urmia University. They were housed in a specific pathogen-free environment under standard conditions of temperature (25±2 °C), relative humidity (50±10%) and light (12 h light/12 h dark). They were fed with a standard pellet diet and had free access to water. Animals were checked daily for occurrence of any toxic signs. All ethical themes of the studies on animals were considered carefully and the experimental protocol was approved by the institute Review Board.

Experimental protocol

After 7 days of acclimation to the environment, the rats were randomly divided into four groups of six animals each ($n=6$): control group (Control), *Crataegus* group (*Crataegus*), doxorubicin group (DOX), and doxorubicin-*Crataegus* group (DOX+*Crataegus*). The two experimental groups (DOX and DOX+*Crataegus*) were treated with DOX (Ebedoxo®, EBEWE Pharma Ges.m.b.H. Nfg. KG, Austria) at a dose of 4 mg/kg BW intraperitoneally on days 1, 7, 14, 21, and 28 (accumulated dose of 20 mg/kg). The group (*Crataegus*) was gavaged *C. monogyna* aqueous extract at a dose of 20 mg/kg b.w. per day for 28 days. The (DOX+*Crataegus*) group also received the same dose of the extract along with DOX administration. The controls were treated with distilled water (5 ml/kg b.w., p.o.) for 28 days and injected with normal saline (2 ml/kg, i.p.) on days 1, 7, 14, 21, and 28. The treatment period was 28 days. The protocol for this study, including doses and duration of treatment for DOX and *Crataegus*, was designed according to previous studies (Khalil et al., 2008; Patil and Balaraman, 2009; Saalu et al., 2010a).

Sampling

Animals were euthanized by CO₂ exposure in a special device following anesthesia with ketamine (75 mg/kg, i.p.) 24 hours after the last treatment. Blood was collected without anticoagulant for serological analyses. Testes, epididymides, and accessory sex glands were quickly dissected out, cleared of adhering connective tissue, and were weighed on a Mattler Basbal scale (Delta Range, Tokyo). Testes were freshly cut with frozen section and periodic acid Schiff (PAS) special staining technique was conducted for histological evaluation.

Sperm characteristics

In order to assess the sperm motility, one caudal epididymis was placed in 1 mL of

Ham's F10 medium. Cauda was cut into 2–3 pieces and incubated at 37 °C for 10 minutes in CO₂ incubator to allow sperm to swim out of the epididymal tubules. One drop of sperm suspension was placed on a microscope slide, and a cover slip was placed over the droplet. At least 10 microscopic fields were observed at 400× magnification using a phase contrast microscope and the percentage of motile sperm was evaluated microscopically within 2–4 minutes of their isolation from the epididymides and was expressed as a percentage of motile sperm of the total sperm counted (Selvakumar *et al.*, 2006).

The epididymal sperm count was determined by hemocytometer. After dilution of epididymal sperm to 1:20 in Ham's medium, approximately 10 µL of this diluted specimen was transferred to each of the counting chambers of the hemocytometer, which was allowed to stand for 5 minutes in a humid chamber to prevent drying. The cells sedimented during this time and were counted with a light microscope at 400×. The sperm count was expressed as number of sperm per milliliter (Zambrano *et al.*, 2005). A 20 µL of sperm suspension was mixed with an equal volume of 0.05% eosin-Y. After 2 minutes incubation at room temperature, slides were viewed by bright-field microscope with 400× magnification. Dead sperms appeared pink and live sperms were not stained. Two hundred sperms were counted in each sample and viability percentages were calculated. For the analysis of morphological abnormalities, sperm smears were drawn on clean and grease-free slides, and allowed to dry in air overnight. The slides were stained with 1% eosin-Y/5 % nigrosin and examined at 400× for the presence of morphological abnormalities such as amorphous, hook less, bicephalic, coiled, or abnormal tails (Wyrobek *et al.*, 1983).

Biochemical parameters

Serum concentrations of follicle-stimulating hormone (FSH) and luteinizing hormone (LH) were measured by enzyme-linked immunosorbent assay (ELISA) as described in the instructions provided by manufacturer's kits (Monobind Inc., USA) as well as testosterone (Demeditec Diagnostics GmbH, Germany). The activities of serum lactate dehydrogenase (LDH), creatine phosphokinase (CPK), and glutamic oxaloacetate transaminase (SGOT) were measured using an automatic blood chemistry analyzer (BT3000 Plus, Biotechnica Instruments, Italy).

Histological parameters

For each testis, five vertical sections from the polar and the equatorial regions were sampled (Qin and Lung, 2002) and an unbiased numerical estimation of the following histological parameters was determined using a systematic random scheme.

Tubule differentiation index (TDI) and spermiation index (SPI)

Two hundred cross-sections of seminiferous tubules were randomly analyzed in each rat (one hundred per testis) for the calculation of tubule differentiation index (TDI) and spermiation index (SPI). TDI is the percentage of seminiferous tubules containing at least three differentiated germ cells (Porter *et al.*, 2006). SPI is the percentage of seminiferous tubules with normal spermiation (Rezvanfar *et al.*, 2008).

Statistical analysis

Results are expressed as mean±SD. Differences between groups were assessed by the analysis of variance (ANOVA) using the SPSS software package for Windows. Statistical significance between groups was determined by Tukey's multiple comparison

Protective effects of *C. monogyna* on reproductive toxicity in male rats

post-hoc test and the p-values less than 0.05 were considered to be statistically significant.

Results

Clinical signs and body and organ weight changes

All animals survived the experimental period. DOX-treated animals showed general signs of deterioration such as piloerection, alopecia, lethargy, hunched posture, shivers, sedation, and low activity. The final body weight, absolute weight of testes and epididymides, and relative weight of testes as well as seminal vesicles and ventral prostate weights were significantly lower than those of the controls after DOX treatment, whereas daily administration of *Crataegus* caused significant increase in the final body weight, absolute and relative weights of testes, absolute weight of epididymides and seminal vesicles and ventral prostate weights of doxorubicin-*crataegus* group in comparison with DOX group. Absolute and relative weights of testes and absolute weight of epididymides as well as seminal vesicles

weight increased significantly in *Crataegus* group compared with the control (Table 1).

Sperm characteristics

Treatment of male rats with DOX caused a significant decrease in the sperm concentration and motility, while dead and abnormal sperms increased compared with those of the control (Table 2). Co-administration of *C. monogyna* fruits aqueous extract caused a significant increase in semen quality and minimized toxic effects of DOX.

Biochemical findings

Administration of DOX alone significantly increased serum level of CPK, LDH, and SGOT compared with the control rats (Table 3). Moreover, serum concentrations of FSH and LH were significantly elevated, while serum level of testosterone decreased by DOX treatment (Table 4). The administration of *C. monogyna* fruits aqueous extract along with DOX significantly restored serum marker levels towards the control value.

Table 1. Effect of doxorubicin and *Crataegus monogyna* fruits aqueous extract on body weight and weights of testis, epididymis, seminal vesicles, and ventral prostate.

| | Control | DOX | <i>Crataegus</i> | DOX + <i>Crataegus</i> |
|------------------------------------|--------------|---------------------------|-----------------------------|-----------------------------|
| Final Body Weight (BW, g) | 225.66±3.20 | 160.83±5.63 ^a | 228.50±3.72 ^b | 189.16±4.87 ^{a,b} |
| Absolute weight (g) | | | | |
| Testes | 2.00±0.062 | 1.31±0.046 ^a | 2.13±0.012 ^{a,b} | 1.60±0.058 ^{a,b} |
| Epididymides | 1.14±0.035 | 0.83±0.022 ^a | 1.21±0.012 ^{a,b} | 1.00±0.028 ^{a,b} |
| Relative weight (per BW, %) | | | | |
| Testes | 0.88±0.017 | 0.81±0.012 ^a | 0.93±0.010 ^{a,b} | 0.84±0.017 ^{a,b} |
| Epididymides | 0.50±0.018 | 0.51±0.024 | 0.52±0.005 | 0.53±0.017 |
| Seminal vesicles (mg) | 644.50±36.16 | 436.50±21.74 ^a | 737.33±32.37 ^{a,b} | 526.33±44.49 ^{a,b} |
| Ventral Prostate (mg) | 191.66±6.94 | 163.66±8.45 ^a | 191.50±12.81 ^b | 180.33±10.76 ^b |

The values are expressed as mean±SD (n = 6). (a) Significant differences as compared with the control group at p<0.05, (b) Significant differences as compared with the doxorubicin group at p<0.05.

Table 2. Effect of doxorubicin and *Crataegus monogyna* fruits aqueous extract on epididymal sperm characteristics.

| | Control | DOX | <i>Crataegus</i> | DOX+ <i>Crataegus</i> |
|--|-------------|-------------------------|-------------------------|---------------------------|
| Sperm count (10⁶/ml) | 77.66±11.94 | 14.50±4.46 ^a | 72.16±5.45 ^b | 51.00±5.65 ^{a,b} |
| Motility (%) | 82.35±1.64 | 42.32±1.14 ^a | 82.10±1.18 ^b | 52.92±1.81 ^{a,b} |
| Dead sperms (%) | 8.95±0.62 | 45.83±1.71 ^a | 8.62±0.41 ^b | 28.04±1.27 ^{a,b} |
| Abnormal sperms (%) | 7.70±0.78 | 31.33±2.47 ^a | 7.41±0.86 ^b | 20.70±1.16 ^{a,b} |

The values are expressed as mean±SD (n = 6). (a) Significant differences as compared with the control group at p<0.05, (b) Significant differences as compared with the doxorubicin group at p<0.05.

Table 3. Effect of doxorubicin and *Crataegus monogyna* fruits aqueous extract on serum lactate dehydrogenase (LDH), creatine phosphokinase (CPK), and glutamic oxaloacetate transaminase (SGOT) activities.

| | Control | DOX | <i>Crataegus</i> | DOX+ <i>Crataegus</i> |
|--------------------|--------------|---------------------------|---------------------------|-----------------------------|
| LDH (IU/l) | 281.66±15.98 | 631.16±54.71 ^a | 256.16±52.25 ^b | 484.83±38.66 ^{a,b} |
| CPK (IU/l) | 245.50±11.70 | 607.83±14.53 ^a | 251.66±8.89 ^b | 520.50±12.84 ^{a,b} |
| SGOT (IU/l) | 94.50±10.25 | 203.16±12.60 ^a | 97.16±13.90 ^b | 182.00±9.31 ^{a,b} |

The values are expressed as mean±SD (n = 6). (a) Significant differences as compared with the control group at p<0.05, (b) Significant differences as compared with the doxorubicin group at p<0.05.

Table 4. Effect of doxorubicin and *Crataegus monogyna* fruits aqueous extract on serum concentrations of sex hormones.

| | Control | DOX | <i>Crataegus</i> | DOX+ <i>Crataegus</i> |
|-----------------------------|-----------|------------------------|------------------------|--------------------------|
| FSH (mIU/ml) | 0.24±0.03 | 0.52±0.05 ^a | 0.28±0.03 ^b | 0.39±0.05 ^{a,b} |
| LH (mIU/ml) | 0.29±0.02 | 0.63±0.05 ^a | 0.31±0.03 ^b | 0.52±0.07 ^{a,b} |
| Testosterone (ng/ml) | 6.85±0.39 | 3.16±0.22 ^a | 6.63±0.48 ^b | 4.82±0.30 ^{a,b} |

The values are expressed as mean±SD (n = 6). (a) Significant differences as compared with the control group at p<0.05, (b) Significant differences as compared with the doxorubicin group at p<0.05.

Table 5. Effect of doxorubicin and *Crataegus monogyna* fruits aqueous extract on tubule differentiation index (TDI) and spermiation index (SPI).

| | Control | DOX | <i>Crataegus</i> | DOX+ <i>Crataegus</i> |
|----------------|------------|-------------------------|-------------------------|---------------------------|
| TDI (%) | 92.33±2.46 | 16.83±2.97 ^a | 92.75±3.31 ^b | 63.58±4.87 ^{a,b} |
| SPI (%) | 91.25±1.44 | 14.16±2.13 ^a | 91.58±3.26 ^b | 59.50±4.43 ^{a,b} |

The values are expressed as mean±S.D. (n = 6) (a) Significant differences as compared with the control group at p<0.05, (b) Significant differences as compared with the doxorubicin group at p<0.05.

Protective effects of *C. monogyna* on reproductive toxicity in male rats

Histopathologic findings

DOX induced drastic morphologic changes in the testis (Figure 1B). Shrunken seminiferous tubules showed severe germ cell aplasia and basement membrane thickening as well as rupture, vacuolization, edematous fluid accumulation, and fibrosis in interstitial and peritubular tissue. In these specimens, Leydig cells were degenerated and appeared with pyknotic nuclei. Moreover, Sertoli cells lost their junction with germ cells and looked amorphous with irregular and smaller nuclei. Administration

of *Crataegus* along with DOX restored these changes towards normality (Figure 1D).

Histological parameters

As seen in Table 5, DOX induced deletion of germ cells during spermatogenesis, which resulted in a dramatic decrease in TDI. Due to the germ cells deletion, the SPI was greatly decreased in the DOX-treated animals. *Crataegus* co-administration significantly attenuated the DOX-induced germ cell loss from seminiferous tubules.

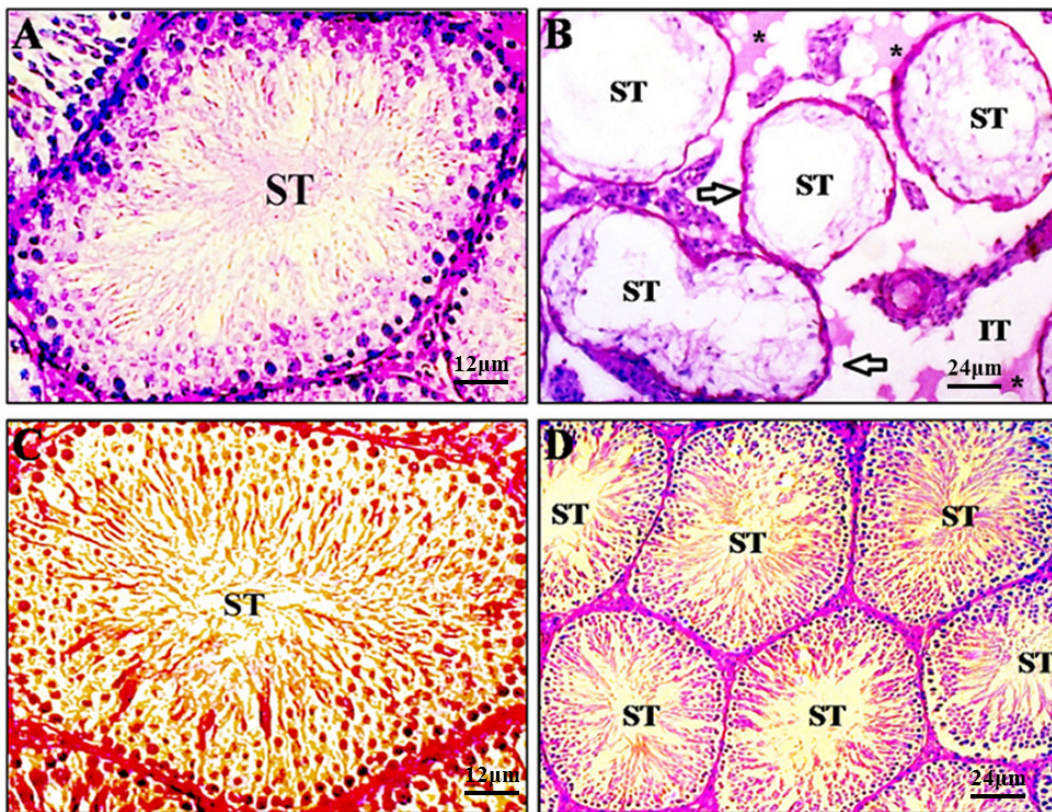


Figure 1. Photomicrographs of testicular sections of control (A), doxorubicin (B), *Crataegus* (C), and doxorubicin+*Crataegus* (D) treated rats. Testes from control group exhibit a normal feature of seminiferous epithelium (ST) and interstitial tissue (IT) with active spermatogenesis (A) as well as *Crataegus*-treated rats (C). However, a testis from a doxorubicin treated rat reveals markedly shrunken seminiferous tubules with severe germ cell aplasia and basement membrane thickening (arrows). Note Rupture, vacuolization, oedematous fluid accumulation (asterisks), and interstitial space widening in intertubular connective tissue (B). *Crataegus* co-treated animals display nearly normal histoarchitecture (D). Periodic acid shiff staining method.

Discussion

Testicular dysfunction is amongst the most common long-term side effects of cytotoxic chemotherapy used in the treatment of many malignancies. In a clinical context, testicular germinal epithelium damage in patients exposed to chemotherapeutic agents could result in long-term male infertility or genetic alterations (Howell, and Shalet, 2001). A strategy to decrease the incidence of serious side-effects of anticancer drugs with preservation of their chemotherapeutic efficacy is necessary. The clinical application of DOX has been largely complicated by its potential toxicity to the various organs including testis (Imahie *et al.*, 1995; Kato *et al.*, 2001). The DOX-induced testicular cytotoxicity appears to be mainly due to overload of oxidative stress, breakage of DNA continuity, and induction of cell apoptosis (Atessahin *et al.*, 2006b).

In the present study, reduction in body weight, weight of the testis, epididymis, and accessory sex glands, and histological changes in testis were indicative of drug toxicity. Since the weight of the testes largely depends on the mass of the differentiated spermatogenic cells (Kato *et al.*, 2002), the marked reduction in organ weight by DOX can be explained by diminished number of germ cells, atrophy of Leydig cells, and a significant lower rate of spermatogenesis as confirmed by our findings. Reduction in the weight of testes and accessory reproductive organs in DOX-treated animals reflect the reduced availability of androgens (Patil *et al.*, 1998). Increased generation of free radicals is one of the possible mechanisms involved in chemotherapeutic agents-induced Leydig cell degeneration which result in marked reduction of serum testosterone (Debnath and Mandal, 2000). Moreover, significant increase in serum LH levels certainly indicates disturbance in Leydig cell function (Jequier, 2000). Chemotherapy can result in long-term or permanent azoospermia, the

mechanism of which is most likely the death of germ cells (Meistrich, 1986). Histological parameters such as tubule differentiation index and spermiation index can also give information about the testicular damage degree as a consequence of germ cell death. In general, massive germ cell loss caused by anticancer drugs is followed by a sharp decline in testicular histological parameters (França and Russell, 1998). As shown in the present study, depletion of seminiferous epithelium and the consequent decrease of histological measurements caused by cytotoxic agents were confirmed in our report.

Structural development and maturation of germ cells and spermiation are important functions of Sertoli cells (Mruk and Cheng, 2004). Therefore, a potential explanation for the failure of spermatogenesis in the DOX-treated males is disruption of testosterone-dependent junction of Sertoli cells with germ cells leading to their disorganization and separation. Additionally, FSH elevation can be an indication of spermatogenesis failure related to various causes including: testicular failure, genetic abnormalities, and toxic exposure such as radiation, chemotherapy, and heat (Lewis, 2007). Moreover, it indicates the abnormal Sertoli cell function resulting in reduced inhibin secretion (Bergmann *et al.*, 1994).

In the present study, epididymal sperm count and motility decreased by DOX treatment while the number of dead and abnormal sperms increased, confirming a previous report that DOX provokes disruption of spermatogenic cells maturation, epididymis sperm concentration reduction, and alteration of sperm morphology (Meistrich *et al.*, 1990). The decreased sperm count clearly shows the elimination of sperm cells at different stages of development and points to free radical attack through DOX metabolism. In fact, oxidative damage to polyunsaturated fatty acids of cell

Protective effects of *C. monogyna* on reproductive toxicity in male rats

membranes has long been considered to result in the impairment of membrane fluidity and permeability. This results in the damage of germ cells, spermatozoa, and mature sperm (Sikka, 2004). It has also been reported that DOX causes an increase in apoptosis of meiotically dividing spermatocytes and type A and intermediate spermatogonia (Shinoda et al., 1999) by intercalating into DNA to produce strand breaks and by inhibiting topoisomerase II activity (Myers and Chabner, 1990). Hence, the decrease in epididymal sperm count observed in DOX-treated rats might reflect the enhanced destruction and/or reduced production of spermatogenic cells. The significant reduction in sperm motility may be due to the toxic effect of cytotoxic drugs on the sperm flagellum through rapid loss of intracellular ATP (Rezvanfar et al., 2008).

It has been shown that chemotherapy can result in the decrease of testicular tricarboxylic acid cycle enzyme activities and thus energy metabolism impairment (Selvakumar et al., 2005). Since ATP may serve as an energy source for sperm motility, the decrease in energy metabolism may play a crucial role in the loss of sperm motility in DOX-administered rats. Mammalian spermatozoa are exceptionally susceptible to damage from reactive oxygen species because of their fragile characteristics in response to oxidative stress (Rao et al., 1989). Therefore, oxidative stress could result in sperms viability and integrity disturbance through lipid peroxidation, DNA fragmentation, and protein oxidation (Sikka, 1996; Agarwal and Saleh, 2002).

In our study, LDH, CPK, and SGOT activities in serum were significantly elevated. These findings suggest that DOX may induce generalized toxicity in rats. To date, a number of studies have shown benefits of antioxidants in protecting male reproductive system from deleterious effects of reactive oxygen species and other free

radicals generated during DOX exposure. It was found that ginseng intestinal metabolite-I (GIM-I), the final intestinal bacterial metabolite of ginseng in humans with antioxidant effects, ameliorates DOX-induced reproductive toxicity (Kang et al., 2002) as well as doxycycline (Yeh et al., 2007b). There is also evidence that green tea extracts can attenuate DOX-induced spermatogenic disorders in conjunction with higher telomerase activity levels (Sato et al., 2010). Recently, two studies also have indicated that grapefruit seed extract, an antioxidant-rich compound, reduces DOX-induced reproductive toxicity through reduction of oxidative stress (Saalu et al., 2010a; Saalu et al., 2010b).

In the present study, it has been shown that *Crataegus monogyna* fruits aqueous extract co-administration was effective in protection or attenuation of testicular damage following DOX exposure. Increasing evidences support the fact that *Crataegus* is beneficial where free radicals are known to play a predominant role in toxicity. Previous studies have shown that hawthorn extract can effectively lessen the extent of oxidative stress induced by cyclophosphamide in mouse bone marrow cells due to its strong antioxidant activity (Hosseinimehr et al., 2008). Furthermore, it has been revealed that hawthorn extract reduces infarct volume and improves neurological score by reducing oxidative stress in rat brain (Elango et al., 2009). In conclusion, the findings of our study indicate that DOX can adversely damage the testicular tissue by imposing oxidative stress, while *Crataegus monogyna* fruits aqueous extract co-administration could effectively counteract DOX-related oxidative injury to testicular tissue through restoration of antioxidant defense system.

Acknowledgement

The authors are thankful to all staff in the Department of Basic Sciences, Faculty of

Veterinary Medicine, Urmia University for their kind cooperation in conducting this study.

Conflict of interest

The authors declare that there are no conflicts of interest in this study.

References

- Agarwal A, Saleh RA. 2002. Role of oxidants in male infertility: rationale, significance, and treatment. *Urol Clin North Am*, 29: 817-827.
- Atessahin AI, Karahan G, Turk S, Yilmaz S, Ceribasi AO. 2006a. Protective role of lycopene on cisplatin induced changes in sperm characteristics, testicular damage and oxidative stress in rats. *Reprod Toxicol*, 21: 42-47.
- Atessahin A, Turk G, Karahan I, Yilmaz S, Ceribasi AO, Bulmus O. 2006b. Lycopene prevents adriamycin-induced testicular toxicity in rats. *Fertil Steril*, 85: 1216-1222.
- Bahorun T, Trotin F, Pommery J, Vasseur J, Pinkas M. 1994. Antioxidant activities of *Crataegus monogyna* extracts. *Planta Medica*, 60: 323-328.
- Bahorun T, Gressier B, Trotin F, Brunet C, Dine T, Luyckx M, Vasseur J, Cazin M, Cazin JC, Pinkas M. 1996. Oxygen species scavenging activity of phenolic extracts from hawthorn fresh plant organs and pharmaceutical preparations. *Arzneimittel-forschung*, 46: 1086-1089.
- Bechter R, Haebler R, Ettl RA, Haseman JK, Dixon RL. 1987. Differential susceptibility of immature rat testes to doxorubicin at critical stages of maturation. *Arch Toxicol*, 60: 415-421.
- Bergmann M, Behre HM, Nieschlag E. 1994. Serum FSH and testicular morphology in male infertility. *Clin Endocrinol*, 40: 133-136.
- Damani MN, Masters V, Meng MV, Burgess P, Turek M, Oates RD. 2002. Postchemotherapy ejaculatory azoospermia: fatherhood with sperm from testis tissue with intracytoplasmic sperm injection. *J Clin Oncol*, 20: 930-936.
- Debnath D, Mandal TK. 2000. Study of quinalphos (an environmental oestrogenic insecticide) formulation (Ekalux 25 E.C.)-induced damage of the testicular tissues and antioxidant defence systems in Sprague-Dawley albino rats. *J Appl Toxicol*, 20: 197-204.
- Elango C, Jayachandaran KS, Devaraj SN. 2009. Hawthorn extract reduces infarct volume and improves neurological score by reducing oxidative stress in rat brain following middle cerebral artery occlusion. *Int J Dev Neurosci*, 27: 799-803.
- França LR, Russel LD. 1998. The testis of domestic animals. In: *Male reproduction; a multidisciplinary overview*, pp. 198-219, Madrid, Churchill Communications.
- Hacker-Klom UB, Meistrich ML, Gohde W. 1986. Effect of doxorubicin and 4'-epidoxorubicin on mouse spermatogenesis. *Mutat Res*, 160: 39-46.
- Hosseinimehr SJ, Azadbakht M, Jahan Abadi A. 2008. Protective effect of hawthorn extract against genotoxicity induced by cyclophosphamide in mouse bone marrow cells. *Environ Toxicol Pharmacol*, 25: 51-56.
- Hou M, Chrysis D, Nurmio M, Parvinen M, Eksborg S, Söder O, Jahnukainen K. 2005. Doxorubicin induces apoptosis in germ line stem cells in the immature rat testis and amifostine cannot protect against this cytotoxicity. *Cancer Res*, 65: 9999-10005.
- Howell SJ, Shalet SM. 2001. Testicular function following chemotherapy. *Hum Reprod Update*, 7: 363-369.
- Imahie H, Adachi T, Nakagawa Y, Nagasaki T, Yamamura T, Hori M. 1995. Effects of adriamycin, an anticancer drug showing testicular toxicity, on fertility in male rats. *J Toxicol Sci*, 20:183-193.
- Jahnukainen K, Hou M, Parvinen M, Eksborg S, Söder O. 2000. Stage-specific inhibition of deoxyribonucleic acid synthesis and induction of apoptosis by anthracyclines in cultured rat spermatogenic cells. *Biol Reprod*, 63: 482-487.
- Jequier AM. 2000. Primary testicular Disease: a Common Cause of Male Infertility. In: *Male Infertility*, pp. 121-124, London, Blackwell Science.
- Kang, J, Lee Y, No K, Jung E, Sung J, Kim Y, Nam S. 2002. Ginseng intestinal metabolite-I (GIM-I) reduces doxorubicin toxicity in the mouse testis. *Reprod Toxicol*, 16: 291-298.

Protective effects of *C. monogyna* on reproductive toxicity in male rats

- Kato M, Makino S, Kimura H, Ota T, Furuhashi T, Nagamura Y. 2001. Sperm motion analysis in rats treated with adriamycin and its applicability to male reproductive toxicity studies. *J Toxicol Sci*, 26: 51-59.
- Katoh C, Kitajima S, Saga Y, Kanno J, Horii I, Inoue T. 2002. Assessment of quantitative dual-parameter flow cytometric analysis for the evaluation of testicular toxicity using cyclophosphamide- and ethinylestradiol-treated rats. *J Toxicol Sci*, 27: 87-96.
- Khalil R, Abuharfeil N, Shabsoug B. 2008. The effect of *Crataegus aronica* aqueous extract in rabbits fed with high cholesterol diet. *Eur J Sci Res*, 22: 352-360.
- Konopa J. G2 block induced by DNA crosslinking agents and its possible consequences. 1988. *Biochem Pharmacol*, 37: 2303-2309.
- Lewis V. 2007. Male Infertility. In: *Reproductive Endocrinology and Infertility*, pp. 194-195, USA, Landes Bioscience.
- Ljubuncic P, Azaizeh H, Portnaya I, Cogan U, Said O, Saleh KA, Bomzon A. 2005. Antioxidant activity and cytotoxicity of eight plants used in traditional Arab medicine. *J Ethnopharmacol*, 99: 43-47.
- Lu CC, Meistrich ML. 1979. Cytotoxic effects of chemotherapeutic drugs on mouse testis cells. *Cancer Res*, 39: 3575-3582.
- Meistrich ML. 1986. Relationship between spermatogonial stem cell survival and testis function after cytotoxic therapy. *Br J Cancer*, 53(Suppl VII): 89-101.
- Meistrich ML, van Beek ME, Liang JC, Johnson SL, Lu J. 1990. Low levels of chromosomal mutations in germ cells derived from doxorubicin-treated stem spermatogonia in the mouse. *Cancer Res*, 50: 370-374.
- Mruk DD, Cheng CY. 2004. Sertoli-Sertoli and Sertoli-germ cell interactions and their significance in germ cell movement in the seminiferous epithelium during spermatogenesis. *Endocr Rev*, 25: 747-806.
- Myers CE, Chabner BA. 1990. Anthracyclines. In: *Cancer chemotherapy: principles and practice*, p. 356, Philadelphia, JB Lippincott.
- Patil S, Patil S, Londonkar R, Patil SB. 1998. Effect of pethidine on spermatogenesis in albino rats. *Ind J Pharmacol*, 30: 249-253.
- Patil L, Balaraman R. 2009. Effect of Melatonin on Doxorubicin Induced Testicular Damage in Rats. *Int J PharmTech Res*, 1: 879-884.
- Porter KL, Shetty G, Meistrich ML. 2006. Testicular edema is associated with spermatogonial arrest in irradiated rats. *Endocrinology*, 147: 1297-1305.
- Prahalathan C, Selvakumar E, Varalakshmi P. 2005a. Protective effect of lipoic acid on adriamycin-induced testicular toxicity. *Clin Chim Acta*, 360: 160-166.
- Prahalathan C, Selvakumar E, Varalakshmi P. 2005b. Lipoic acid ameliorates adriamycin-induced testicular mitochondriopathy. *Reprod Toxicol*, 20: 111-116.
- Qin D, Lung MA. 2002. Morphometric study on Leydig cells in capsulotomized testis of rats. *Asian J Androl*, 4: 49-53.
- Quiles JL, Huertas JR, Battino M, Mataix J, Ramirez-Tortosa MC. 2002. Antioxidant nutrients and adriamycin toxicity. *Toxicology*, 180: 79-95.
- Rao B, Soufir JC, Martin M, David G. 1989. Lipid peroxidation in human spermatozoa as related to midpiece abnormalities and motility. *Gamete Res*, 24: 127-134.
- Rezvanfar MA, Sadrkhanlou RA, Ahmadi A, Shojaei-Sadee H, Mohammadirad A, Salehnia A, Abdollahi M. 2008. Protection of cyclophosphamide-induced toxicity in reproductive tract histology, sperm characteristics, and DNA damage by an herbal source; evidence for role of free-radical toxic stress. *Hum Exp Toxicol*, 27: 901-910.
- Rice-Evans C. 2004. Flavonoids and isoflavones: absorption, metabolism and bioactivity. *Free Radic Biol Med*, 36: 827-828.
- Saalu LC, Osinubi AA, Oguntola JA, Adeneye IO, Benebo AO. 2010a. The delayed testicular morphologic effects of doxorubicin and the rejuvenating role of grapefruit seed extract. *Int J Pharmacol*, 6: 192-199.
- Saalu LC, Osinubi AA, Jewo PI, Oyewopo AO, Ajayi GO. 2010b. An evaluation of influence of *citrus paradisi* seed extract on doxorubicin-induced oxidative stress and impaired spermatogenesis. *Asian J Sci Res*, 3: 51-61.
- Sato K, Sueoka K, Tanigaki R, Tajima H, Nakabayashi A, Yoshimura Y, Hosoi Y. 2010. Green tea extracts attenuate doxorubicin-induced spermatogenic disorders in

- conjunction with higher telomerase activity in mice. *J Assist Reprod Genet*, 27: 501-508.
- Selvakumar E, Prahalathan C, Mythili Y, Varalakshmi P. 2005. Beneficial effects of DL-alpha-lipoic acid on cyclophosphamide-induced oxidative stress in mitochondrial fractions of rat testis. *Chem Biol Intract*, 152: 59-66.
- Selvakumar E, Prahalathan C, Sudharsan PT, Varalakshmi P. 2006. Chemoprotective effect of lipoic acid against cyclophosphamide-induced changes in the rat sperm. *Toxicology*, 217: 71-78.
- Shinoda K, Mitsumori K, Yasuhara K, Uneyama C, Onodera H, Hirose M, Uehara M. 1999. Doxorubicin induces male germ cell apoptosis in rats. *Arch Toxicol*, 73: 274-281.
- Sikka SC. 1996. Oxidative stress and role of antioxidants in normal and abnormal sperm function. *Front Biosci*, 1: e78-86.
- Sikka SC. 2004. Role of oxidative stress and antioxidants in andrology and assisted reproductive technology. *J Androl*, 25: 5-18.
- Speth PA, van Hoesel QG, Haanen C. 1988. Clinical pharmacokinetics of doxorubicin. *Clin Pharmacokinet*, 15: 15-31.
- Vernet P, Aitken RJ, Drevet JR. 2004. Antioxidant strategies in the epididymis. *Mol Cell Endocrinol*, 216: 31-39.
- Wyrobek AJ, Gordon LA, Burkhardt JG, Francis MW, Kapp RW Jr, Letz G, Malling HV, Topham JC, Whorton M.D. 1983. An evaluation of the mouse sperm morphology test and other sperm tests in nonhuman mammals. A report of the US environmental protection agency gene-tox program. *Mutat Res*, 115: 1-72.
- Xu MF, Tang PL, Qian ZM, Ashraf M. 2001. Effects by doxorubicin on the myocardium are mediated by oxygen free radicals. *Life Sci*, 68: 889-901.
- Yao M, Ritchie HE, Brown-Woodman PD. 2008. A reproductive screening test of hawthorn. *J Ethnopharmacol*, 118: 127-132.
- Yeh YC, Lai HC, Ting CT, Lee WL, Wang LC, Liu TJ. 2007a. Effects of doxocycline on doxorubicin induced oxidative damage and apoptosis in mouse testes. *Biol Reprod*, 77: 217.
- Yeh YC, Lai HC, Ting CT, Lee WL, Wang LC, Wang KY, Lai HC, Liu TJ. 2007b. Protection by doxycycline against doxorubicin-induced oxidative stress and apoptosis in mouse testes. *Biochem Pharmacol*, 74: 969-980.
- Zambrano E, Rodríguez-González GL, Guzmán C, García-Becerra R, Boeck L, Díaz L, Menjivar M, Larrea F, Nathanielsz PW. 2005. A maternal low protein diet during pregnancy and lactation in the rat impairs male reproductive development. *J Physiol*, 563: 275-284.
- Zanetti SR, Maldonado EN, Aveldaño MI. 2007. Doxorubicin effects testicular lipid with long-chain (C18-C22) and very long-chain (C24-C32) polyunsaturated fatty acids. *Cancer Res*, 67: 6973-6980.
- Zhang Z, Chang Q, Zhu M, Huang Y, Ho WK., Chen Z. 2001. Characterization of antioxidants present in hawthorn fruits. *J Nutr Biochem*, 12: 144-152.