

Original Research Article

## Protective effect of *Rheum turkestanicum* root against mercuric chloride-induced hepatorenal toxicity in rats

Azar Hosseini<sup>1</sup>, Arezoo Rajabian<sup>2</sup>, Sahar Fanoudi<sup>2</sup>, Mahdi Farzadnia<sup>3</sup>, Mohammad Taher Boroushaki<sup>1, 2, \*</sup>

<sup>1</sup> Pharmacological Research Center of Medicinal Plants, Mashhad University of Medical Sciences, Mashhad, Iran

<sup>2</sup> Department of Pharmacology, Faculty of Medicine, Mashhad University of Medical Sciences, Mashhad, Iran

<sup>3</sup> Cancer Molecular Pathology Research Center, Imam Reza Hospital, Faculty of Medicine, Mashhad University of Medical Sciences, Mashhad, Iran

---

**Article history:**

Received: Feb 05, 2018

Received in revised form:

May 06, 2018

Accepted: May 08, 2018

Epub ahead of print

---

**\* Corresponding Author:**

Tel: 05138002261

Fax: 05138828567

boroushakimt@mums.ac.ir

---

**Keywords:**

HgCl<sub>2</sub>

Oxidative stress

*Rheum turkestanicum*

Lipid peroxidation

---

**Abstract**

**Objective:** The present study was designed to investigate the protective effects of hydroalcoholic extract of *Rheum turkestanicum* against HgCl<sub>2</sub> hepatorenal toxicity in rats.

**Materials and Methods:** Animals were randomly divided into five groups (n= 6 in each group) and received HgCl<sub>2</sub> and plant's extract, intraperitoneally. Group1 received saline (1 mL/kg/day), group 2 received extract (200 mg/kg/day), group 3 was treated with HgCl<sub>2</sub> (5 mg/kg/day,) and groups 4 and 5 received the extract (100 and 200 mg/kg/day, respectively), 1 hr before HgCl<sub>2</sub> administration. All injections last for 3 days. Blood samples and specimens of the liver and kidney were collected 24 hr after the last injection.

**Results:** Data showed that HgCl<sub>2</sub> significantly increases liver malondialdehyde (MDA) level, reduces total sulfhydryl content and increases serum alanine aminotransferase (ALT) and aspartate aminotransferase (AST) activity, compared to control group. The histopathological changes such as inflammatory cells infiltration was observed in HgCl<sub>2</sub>-treated group while plant's extract partially improved histological changes. The extract (100 and 200 mg/kg/day) improved the liver functions as reflected by significant reductions in AST and ALT levels in serum, MDA decreased and the content of total sulfhydryl elevated. Also, the extract improved necrosis and atrophy of the kidney induced by HgCl<sub>2</sub>. Pretreatment with the extract reduced creatinine and urea in serum, and glucose and protein concentrations in urine, compared to HgCl<sub>2</sub>- treated group (group III). The extract significantly reversed HgCl<sub>2</sub>-induced depletion in thiol content and elevation in MDA content.

**Conclusion:** Therefore, oxidative stress may play an important role in HgCl<sub>2</sub>-induced hepatorenal injury and *R. turkestanicum* extract may be regarded as a useful to protect the kidney and liver against HgCl<sub>2</sub>-induced oxidative damage.

---

Please cite this paper as:

Hosseini A, Rajabian A, Fanoudi S, Farzadnia M, Boroushaki MT. Protective effect of *Rheum turkestanicum* root against mercuric chloride-induced hepatorenal toxicity in rats. Avicenna J Phytomed, 2018. Epub ahead of print.

## Introduction

Mercury is an environmental and industrial pollutant. It induces severe alterations in tissues of both humans and animals (Mahboob et al., 2001; Şener et al., 2003). Different forms of mercury compounds cause toxicity in various organs following accidental and / or occupational exposures. Mercury can lead to toxicity in the kidney and liver. Accumulation of mercury in the kidney causes acute renal failure (Emanuelli et al., 1996; Tanaka-Kagawa et al., 1998). The liver plays an important role in biotransformation of mercury. However, after exposure to mercury compounds, mercury localizes in the liver tissue (El-Shenawy and Hassan, 2008; Sridhar et al., 2013). Mercury is also well known as haematotoxic (Durak et al., 2010), neurotoxic (Moraes-Silva et al., 2014), and genotoxic chemical (Rozgaj et al., 2005) and exerts negative effects on the reproductive system in male rats (Kalender et al., 2013). Another target for mercury is thiol-containing enzymes (Emanuelli et al., 1996; Nogueira et al., 2003). Mercury binds to sulfhydryl groups and causes reduction of glutathione levels, leading to increases in the levels of reactive oxygen species (ROS), such as superoxide anion radicals, hydrogen peroxide and hydroxyl radicals (Stohs and Bagchi, 1995). Increased levels of ROS cause lipid, protein and DNA oxidation (Clarkson, 1997). Thus, since oxidative stress and endogenous thiol depletion play important roles in mercury-induced toxicity, antioxidants can be useful in treatment of mercury poisoning (Patrick, 2002; Pillai and Gupta, 2005). Recent studies have shown that melatonin (Nava et al., 2000; Şener et al., 2003), curcumin (Agarwal et al., 2010a) and vitamin E (Agarwal et al., 2010b) have protective effects against mercuric chloride (HgCl<sub>2</sub>)-induced acute renal toxicity. Also, Boroushaki et al., showed that pomegranate seed oil decreased HgCl<sub>2</sub>- toxicity in the kidney and liver (Boroushaki et al., 2016; Boroushaki et al., 2014b). *Rheum turkestanicum* (Polygonaceae) is a plant that grows widely in central Asia and in

Northeast of Iran. In traditional medicine, the root of *R. turkestanicum* has been used as an anti-diabetic, anti-hypertensive and anticancer agent (Dorsey and Kao, 2007). Rheum species contain antioxidant compounds. Rhapontigenin and rhaponticin isolated from *R. undulatum*, scavenge ROS, 1, 1-diphenyl-2-picrylhydrazyl (DPPH) radical, and hydrogen peroxide (H<sub>2</sub>O<sub>2</sub>) (Zhang et al., 2007). Also, these compounds decrease membrane lipid peroxidation and cellular DNA damage (Zhang et al., 2007). A recent study showed that some of antioxidant compounds isolated from *R. emodi* protect H9c2 cells against H<sub>2</sub>O<sub>2</sub> -induced toxicity (Chai et al., 2012). In another study, it has been shown that *R. turkestanicum* reduces doxorubicin toxicity in H9c2 cell line via reduction of ROS production (Hosseini and Rajabian, 2016). Also, it was shown that *R. turkestanicum* reduced lipid peroxidation and oxidative stress in diabetic rats (Hosseini et al., 2017). In this research, the protective effect of root extract of *R. turkestanicum* was evaluated against mercuric chloride-induced nephrotoxicity and hepatotoxicity in rats.

## Materials and Methods

### Animals

Adult male Wistar rats (obtained from Animal House, Faculty of Medicine, Mashhad University of Medical Sciences, Mashhad, Iran), weighing 220-250 g, were used in this research. Animals were housed in pathogen-free cages with 12 hr/ 12 hr light/dark cycles and they had with free access to food and water *ad libitum*. All procedures were approved by the University Ethics Committee and were performed in compliance with National Laws and National Institutes of Health guidelines for the use and care of laboratory animals.

### Chemicals

DTNB (2,20-dinitro-5,50-dithiodibenzoic acid), TBA (2-thiobarbituric acid), n-butanol, Na<sub>2</sub>EDTA

(ethylenediaminetetraacetic acid disodium salt), Trizma base [Tris (hydroxymethyl) aminomethane], HCl (hydrochloric acid), KCl (potassium chloride), phosphoric acid (1%), ether, TCA (Trichloroacetic acid) and methanol were purchased from Merck (Darmstadt, Germany). Mercuric chloride (HgCl<sub>2</sub>) was obtained from May & Baker (London, England).

### Preparation of plant's extract

The root of *R. turkestanicum* Janisch. was collected from Chenar, a village in Zavin Rural District, Kalat County, Khorasan Razavi Province, Iran. The plant was identified by M.R. Joharchi, from Ferdowsi University, Mashhad, Iran and a voucher specimen of this plant was deposited (No. 21377). Dried roots were grounded to a fine powder and then, 50 g of this powder was subjected to extraction with 70% ethanol in a Soxhlet apparatus for 48 hr. The hydro-alcoholic extract was then dried on a water bath and stored in -18°C freezer. The yield of extract was 21% (w/w).

### Experimental design

After acclimatization, animals were randomly divided into five groups (six rats in each group) and individually put in the metabolic cages. Group I (control) was treated with saline (1ml/kg). Group II received 200 mg/kg extract. Group III was treated with HgCl<sub>2</sub> (5 mg/kg). Groups IV and V were treated with extract (100 and 200 mg/kg, respectively), 1 hr before receiving HgCl<sub>2</sub>. All procedures were done between 10–12 am. All treatments were given intraperitoneally for three days on a daily basis. On day 4, 24-hr urine samples were collected for measuring urinary glucose and protein concentrations. Twenty four hours after the last injection of HgCl<sub>2</sub>, all rats were anesthetized by ether. Blood samples were collected by cardiac puncture, and centrifuged at 1000 "g" for 15 min to separate the serum for assessment of biochemical parameters. The right kidney and liver were removed, homogenized in

cold KCl solution (1.5%, pH=7) to give a 10% homogenate suspension and used for biochemical assays. A piece of the liver and the left kidney were fixed in 10% formalin and sectioned for histopathological studies.

### Biochemical methods

Glucose concentration was assayed by an enzymatic method (glucose oxidase) and protein concentration was measured by a turbidimetric method (Lott and Turner, 1975;McElderry et al., 1982). Urea concentration was determined colorimetrically, using Autoanalyzer (Technicon RA-1000, London, England) and urea kit (Man Lab Company, Tehran, Iran). Creatinine concentration was measured by the Jaffe's method (Masson et al., 1981). ALT and AST level measurement were done according to the International Federation of Clinical Chemistry (IFCC) method and expressed as units per liter (Adeneye and Olagunju, 2008).

### Calculation of MDA level

Lipid peroxidation in the kidney tissues was measured based on the levels of malondialdehyde (MDA), which is the end-product of lipid peroxidation and reacts with TBA as a thiobarbituric acid reactive substance (TBARS) to produce a red-colored complex which has a peak absorbance at 532 nm (Hosseinzadeh et al., 2005). Briefly, 3 ml phosphoric acid (1%) and 1ml TBA (0.6%) were added to 0.5 ml of homogenate in a centrifuge tube and the mixture was heated for 45 min in a boiling water bath. After cooling, 4 ml n-butanol was added to the mixture, vortexed for 1 min, and centrifuged at 20,000 "g" for 20 min. The organic layer was transferred to a fresh tube and its absorbance was measured at 532 nm.

$$\text{MDA (mmol/g tissue)} = \text{absorbance}/1.56 \times 10^5$$

### Calculation of total thiol content

Total SH groups were measured using DTNB. This reagent reacts with SH groups

to produce a yellow colored complex which has a peak absorbance at 412 nm. Here, 1 ml Tris–EDTA buffer (pH=8.6) was added to 0.5 ml kidney homogenate in 2-ml cuvettes and absorbance was read at 412 nm against Tris–EDTA buffer alone (A1). Then, 20  $\mu$ l DTNB reagent (10mM in methanol) was added to the mixture, and after 15 min (at room temperature), the sample absorbance was read again (A2). The absorbance of DTNB reagent alone was also read and recorded as blank (B). Total thiol concentration (mM) was calculated using the following equation (Boroushaki et al., 2014a; Bouroshaki et al., 2010):

$$\text{Thiol concentration (mM)} = (A2-A1-B) \times 1.07/0.05 \times 13.6$$

### Histological study

Liver and kidney tissue samples were fixed in 10% formalin for at least 24 hr. The fixed specimens were processed, using paraffin-embedding technique. Then, hematoxylin and eosin (H&E) staining was performed for histopathological examinations which were done under light microscopy (Oda and El-Ashmawy, 2012).

### Statistical analysis

Data were expressed as mean $\pm$ SEM. Statistical analysis was performed using one-way analysis of variance (ANOVA) followed by Tukey–Kramer *post hoc* test for multiple comparisons. The p-values less than 0.05 were considered statistically significant.

## Results

### Biochemical studies

#### Serum AST and ALT measurement

ALT and AST were measured in serum. Results showed that, HgCl<sub>2</sub> significantly increases ALT and AST (p<0.001). The extract at doses of 100 mg/kg (p<0.01) and 200mg/kg (p<0.001) decreased AST level in HgCl<sub>2</sub>-treated groups. Also, the extract at doses of 100mg/kg (p<0.05) and 200 mg/kg

(p<0.01) decreased ALT levels. The levels of ALT and AST were not significantly different between control and extract-treated groups (Figure 1).

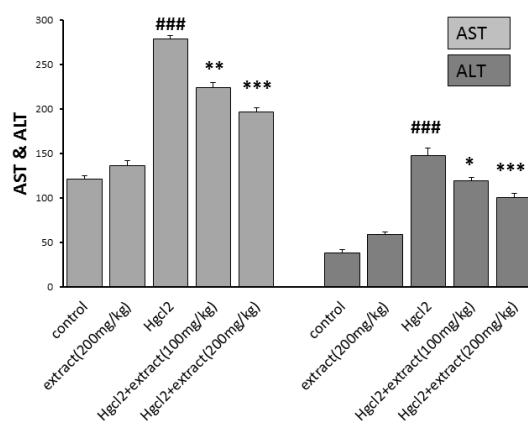


Figure 1. Effect of pre-treatment with *R. turkestanicum* against HgCl<sub>2</sub> intoxication in terms of serum AST and ALT activity. Values are expressed as mean $\pm$ SEM (n=6). ###p<0.001 as compared with control group. \*p<0.05, \*\*p<0.01 and \*\*\*p<0.001 as compared to HgCl<sub>2</sub>-treated group.

#### Serum urea and creatinine measurement

The level of urea and creatinine increased in HgCl<sub>2</sub> group (p<0.001). In groups 4 and 5, the extract decreased urea and creatinin at doses of 100 (p<0.05) and 200 mg/kg (p<0.001). The level of urea and creatinine in groups 2 and control were the same (Figures 2 and 3).

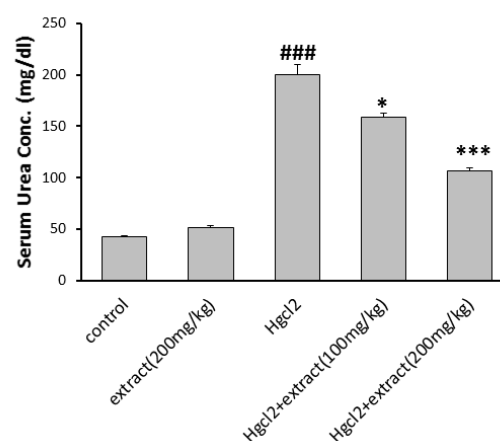


Figure 2. Effect of the pre-treatment with *R. turkestanicum* against HgCl<sub>2</sub>- intoxication in terms of serum urea levels. Values are expressed as mean $\pm$ SEM (n=6). ### p<0.001 as compared to control group. \*p<0.05 and \*\*\*p<0.001 as compared to HgCl<sub>2</sub>-treated group.

## *Rheum turkestanicum* root against mercuric chloride toxicity

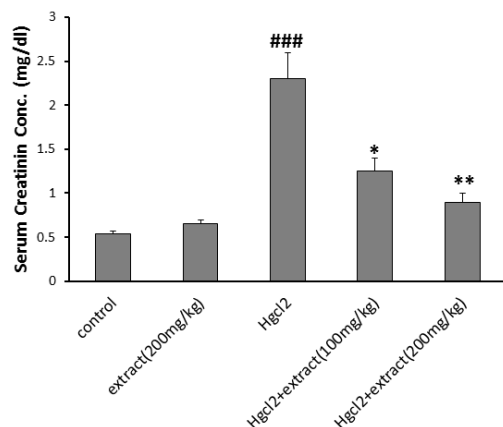


Figure 3. Effect of pre-treatment with *R. turkestanicum* against HgCl<sub>2</sub>- intoxication in terms of serum creatinine levels. Values are expressed as mean±SEM (n=6). ### p<0.001 as compared to control group. \*p<0.05 and \*\*p<0.01 as compared to HgCl<sub>2</sub>-treated group.

### Lipid peroxidation

The lipid peroxidation level in the kidney and liver was evaluated as malondialdehyde level (MDA). As shown

in Figure 4, mercuric chloride administration, significantly increased MDA levels in the kidney compared to control group and group 2 (p<0.001). In groups 4 and 5, the extract at the doses of 100 mg/kg (p<0.05) and 200 mg/kg (p<0.01) significantly decreased renal MDA levels compared to HgCl<sub>2</sub>-treated group. In the liver, MDA levels were significantly increased in HgCl<sub>2</sub>-treated group compared to the group 2 and control group (p<0.001). In groups 4 and 5, MDA levels were decreased (p<0.01 for 100mg/kg and p<0.001 for 200mg/kg).

### Urinary glucose and protein measurement

As shown in Table 1, HgCl<sub>2</sub> increased the urinary levels of protein and glucose. In groups 4 and 5, the extract at the dose of 200 mg/kg decreased these parameters in comparison to HgCl<sub>2</sub>- treated group.

Table 1. Effect of *R. turkestanicum* on urinary levels of protein and glucose. Data are shown as mean±SEM (n=6). \*p<0.05 as compared to HgCl<sub>2</sub>-treated animals and ###p<0.001 in comparison to control group.

	Control saline (1ml/kg)	Extract (200mg/kg)	HgCl <sub>2</sub> (5mg/kg)	Extract (100mg/kg)+HgCl <sub>2</sub>	Extract (200mg/kg)+HgCl <sub>2</sub>
urinary protein (mg/dl)	400±12	410±10.5	810±20 ###	640±27	595±19 *
urinary glucose (mg/dl)	40±5	35±3.7	746±21 ###	728±18	610±12 *

### Total thiol content

Figure 5 shows that HgCl<sub>2</sub> significantly decreased the total thiol content in the liver and kidney homogenates (p<0.001) compared to the control group and group 2. In groups 4 and 5, the extract increased thiol content in kidney tissue only at the dose of 200 mg/kg (p<0.05), but increased the thiol content in the liver at both doses (p<0.001), compared to the group 3.

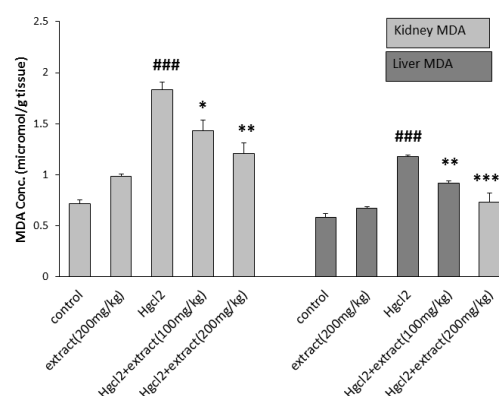


Figure 4. Effect of pretreatment with *R. turkestanicum* against HgCl<sub>2</sub> intoxication in terms of MDA content in rats kidney and liver. Values are expressed as mean±SEM (n=6). ### p<0.001 as compared to control group. \*p<0.05, \*\*p<0.01 and \*\*\*p<0.001 as compared to HgCl<sub>2</sub>-treated group.

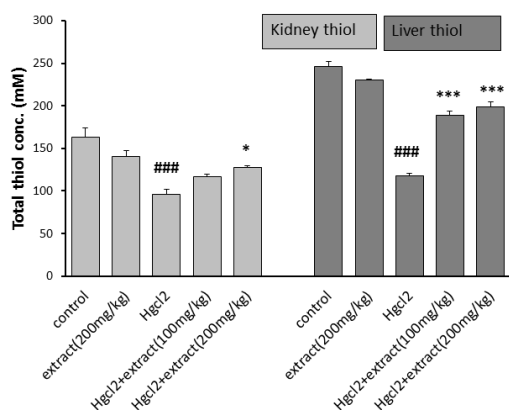


Figure 5. Effect of pretreatment with *R. turkestanicum* against HgCl<sub>2</sub> intoxication in terms of thiol content in rats kidney and liver. Values are expressed as mean±SEM (n=6). ### p<0.001 as compared to control group. \*p<0.05 and \*\*\*p<0.01 as compared to HgCl<sub>2</sub>-treated group.

### Histopathological Observations

Liver histopathological studies showed inflammatory, infiltration around the tubular central vein in HgCl<sub>2</sub>-treated group (Figure 6). Liver sections pre-treated with extract (200 mg/kg) showed partial recovery and lower infiltration compared to HgCl<sub>2</sub> group (Figure 6). Renal histopathological changes are shown in Figure 7. There was no evidence of structural changes nor tissue damage in control group. In HgCl<sub>2</sub>-treated group, severe tubular necrosis and atrophy of renal tissue were observed. Structural and morphological changes in the extract-treated groups were lower compared to HgCl<sub>2</sub> group (Figure 7)

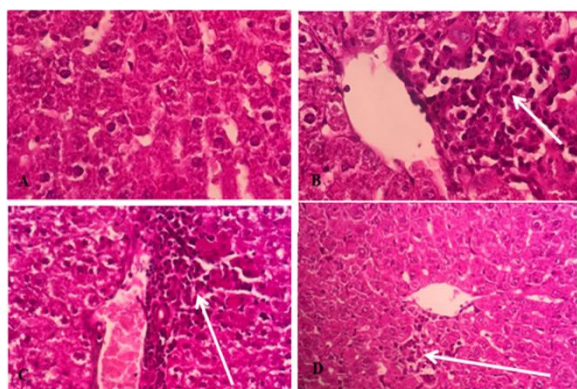


Figure 6. Photomicrographs showing the pathological changes of liver tissues after HgCl<sub>2</sub> exposure and pretreatment with *R. turkestanicum*. A) Control: normal liver tissue (X100); B) Group treated with 5 mg/kg HgCl<sub>2</sub> showing inflammatory

cells infiltration and Peri central vein inflammation (2+) (X100); C) Rats treated with extract 100 mg/kg of extract showed portal inflammation (2+) (X100) and D) Rats treated with extract 200 mg/kg showed peri central vein inflammation (1+) (X100). Liver injuries were reduced in extract-treated groups. The (+) sign shows the severity of injury as 1+ indicates mild and 2+ indicates moderate damages.

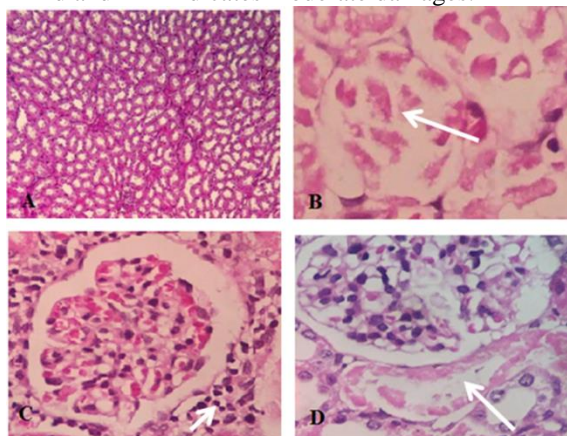


Figure 7. Photomicrographs showing the pathological changes of kidney tissues after HgCl<sub>2</sub> exposure and pretreatment with *R. turkestanicum*. A) Control: normal kidney tissue (X×100); B) Group treated with 5 mg/kg HgCl<sub>2</sub> showing tubular necrosis (3+) (X 400); C) Rats treated with extract 100 mg/kg +HgCl<sub>2</sub> showed peri glomerular inflammation (2+) (X 400) and D) Rats treated with extract 200 mg/kg+ HgCl<sub>2</sub> showed focal necrosis of proximal tubule (1+) (X400). Lower levels of kidney injuries were observed in extract-treated groups. The (+) sign shows the severity of injury. 1+ (mild), 2+ (moderate) and 3+ (severe).

### Discussion

Our study demonstrated that treatment of rats with HgCl<sub>2</sub> significantly enhances MDA level which is in agreement with the results of previous reports (Agarwal et al., 2010b; Miller et al., 1991). Recent studies have shown that mercuric chloride increases the production of many ROS such as superoxide and H<sub>2</sub>O<sub>2</sub> (Huang et al., 1996), which cause lipid peroxidation and subsequently oxidative tissue damage (Gstraunthaler et al., 1983; Linden et al., 2008). Mercuric chloride has a great affinity for thiol groups (-SH) of endogenous biomolecules (Clarkson, 1997). Some proteins and agents of low molecular weight such as cysteine and glutathione (GSH) which are found in body,

contain thiol group and are regarded as a target for mercury. Therefore, mercury inhibits the activities of antioxidant enzymes such as GSH, via binding to thiol groups (Li et al., 2011; Zalups, 2000). Our study showed that mercuric chloride decreased the thiol content in liver and kidney tissues while the extract increased the thiol level in tissues. Also, in this research, the activity of serum transaminases (AST and ALT) increased after HgCl<sub>2</sub> administration which was in agreement with another study (El-Shenawy and Hassan, 2008). Elevation of these enzymes is related to hepatocellular necrosis which led to release of these enzymes into the blood (Sharma et al., 2007). These enzymes reduced significantly in extract-treated groups in comparison to HgCl<sub>2</sub>-group. Also, histological changes of kidney revealed that pretreatment with *R. turkestanicum* resulted in a significant and dose-dependent decrease in the rate of tubular atrophy and necrosis. In group 4, which received extract 200mg/kg, mercury toxic effects in terms of necrosis and cellular casts were reduced compared to groups 2 and 3. Histological changes in the liver showed inflammatory, infiltration in HgCl<sub>2</sub>-treated group while these changes decreased in extract-treated groups especially those treated with the higher dose of extract. Recent studies have shown that most herbal medicines improve tissue damages by their antioxidant activities (Alam et al., 2005; Van Acker et al., 1996). Phenols and polyphenolic compounds, such as flavonoids, are widely found in food products derived from plant sources, and they have been shown to possess significant antioxidant activities (Andiç et al., 2009; Ebrahimzadeh and Bahramian, 2009). In the present study, we showed that *R. turkestanicum* root extract has a potent antioxidant activity, and could protect the kidney and liver against HgCl<sub>2</sub>-induced toxicity via reduction of MDA and increasing of thiol levels. The main bioactive components of rheum species are anthraquinone derivatives including

emodin, aloe-emodin, rhein, chrysophanol, physcion, and danthron. Other constituents such as dianthrone, stilbenes, anthocyanins, flavonoids, anthraglycosides, polyphenols, essential oil, organic acids and chromone glycosides (Alam et al., 2005). Due to the presence of anti-oxidant compounds in rheum species, probably this genus has protective effects against oxidative stress. A study showed that *R. emodi* has protective effects against cadmium chloride and mercuric chloride toxicity (Alam et al., 2005). Also, emodin ameliorates cisplatin-induced apoptosis in rats renal tubular cells *in vitro* through modulating the AMPK/mTOR signaling pathways and activating autophagy (Zhen-kui et al., 2014). Other studies showed that emodin can alleviate ischemia/reperfusion injury in renal transplantation, possibly through reduction of lipid peroxidation and inhibition of inflammatory factors production (Liu et al., 2016). *R. ribes* root improved renal dysfunction in alloxan-induced diabetic rats by controlling blood glucose and exerting protective effects in the kidneys (Hamzeh et al., 2014). Therefore, protective effects of *R. turkestanicum* may be related to the antioxidant activity of its active compounds. More studies are needed to provide a better understanding of protective effects *R. turkestanicum* root extract.

This study revealed that *R. turkestanicum* extract protects the liver and kidney against HgCl<sub>2</sub>-induced toxicity. This protective effect may be related to anti-oxidant activity of the extract. More investigations are needed to discover the underlying exact mechanism(s).

#### **Acknowledgment**

This investigation was financially supported by Pharmacological Research Center of Medicinal Plants, Mashhad University of Medical Sciences, Mashhad, Iran.

#### **Conflicts of interest**

Authors declare no conflicts of interest.

## References

- Adeneye A and Olagunju J. 2008. Protective effect of oral ascorbic acid against acetaminophen induced-hepatic injury in rats. *Afr J Biomed Res*, 11: 183 -190.
- Agarwal R, Goel SK, Behari JR. 2010a. Detoxification and antioxidant effects of curcumin in rats experimentally exposed to mercury. *J Appl Toxicol*, 30: 457-468.
- Agarwal R, Goel SK, Chandra R. 2010b. Role of vitamin E in preventing acute mercury toxicity in rat. *Environ Toxicol Pharmacol*, 29: 70-78.
- Alam MM, Javed K and Jafri MA. 2005. Effect of *Rheum emodi* (Revand Hindi) on renal functions in rats. *J Ethnopharmacol*, 96: 121-125.
- Andiç S, Tunçtürk Y, Ocak E, Kose S. 2009. Some chemical characteristics of edible wild Rhubarb species (*Rheum ribes* L.). *Res J Agric Biol Sci*, 5: 973-977.
- Boroushaki MT, Asadpour E, Sadeghnia HR, Dolati K. 2014a. Effect of pomegranate seed oil against gentamicin -induced nephrotoxicity in rat. *J Food Sci Technol*, 51: 3510-3514.
- Boroushaki MT, Hosseini A, Dolati K, Mollazadeh H, Rajabian A. 2016. Protective effect of pomegranate seed oil against mercuric chloride-induced hepatotoxicity in rat. *Acta Poloniae Pharmaceutica Drug Res*, 73: 991-997.
- Boroushaki MT, Mollazadeh H, Rajabian A, Dolati K, Hoseini A, Paseban M, Farzadnia M. 2014b. Protective effect of pomegranate seed oil against mercuric chloride-induced nephrotoxicity in rat. *Ren Fail*, 36: 1581-1586.
- Boroushaki MT, Sadeghnia HR, Banihasan M, Yavari S. 2010. Protective effect of pomegranate seed oil on hexachlorobutadiene-induced nephrotoxicity in rat kidneys. *Ren Fail*, 32: 612-617.
- Chai YY, Wang F, Li YL, Liu K, Xu H. 2012. Antioxidant Activities of Stilbenoids from *Rheum emodi* Wall. *Evid Based Complement Alternat Med*, 2012: 603678.
- Clarkson TW. 1997. The toxicology of mercury. *Crit Rev Clin Lab Sci*, 34: 369-403.
- Dorsey JF and Kao GD. 2007. Aloe (-emodin) for cancer? More than just a comforting salve. *Cancer Biol Ther*, 6: 89-90.
- Durak D, Kalender S, Uzun FG, Demyr F, Kalender Y. 2010. Mercury chloride-induced oxidative stress in human erythrocytes and the effect of vitamins C and E in vitro. *African J Biotechnol* 9:488-495.
- Ebrahimzadeh MA and Bahramian F. 2009. Antioxidant activity of *Crataegus pentaegyna* subsp. *elburensis* fruits extracts used in traditional medicine in Iran. *Pak J Biol Sci*, 12: 413-419.
- El-Shenawy SM and Hassan NS. 2008. Comparative evaluation of the protective effect of selenium and garlic against liver and kidney damage induced by mercury chloride in the rats. *Pharmacol Rep*, 60: 199-208.
- Emanuelli T, Rocha JB, Pereira ME, Porciuncula LO, Morsch VM, Martins AF, Souza DO. 1996. Effect of mercuric chloride intoxication and dimercaprol treatment on delta-aminolevulinatase dehydratase from brain, liver and kidney of adult mice. *Pharmacol Toxicol*, 79: 136-143.
- Gstraunthaler G, Pfaller W and Kotanko P. 1983. Glutathione depletion and in vitro lipid peroxidation in mercury or maleate induced acute renal failure. *Biochem pharmacol*, 32: 2969-2972.
- Hamzeh S, Farokhi F, Heydari R, Manaffar R. 2014. Renoprotective effect of hydroalcoholic extract of *Rheum ribes* root in diabetic female rats. *Avicenna J Phytomed*, 4: 392-401.
- Hosseini A, Mollazadeh H, Amiri MS, Sadeghnia HR, Ghorbani A. 2017. Effects of a standardized extract of *Rheum turkestanicum* Janischew root on diabetic changes in the kidney, liver and heart of streptozotocin-induced diabetic rats. *Biomed Pharmacother*, 86: 605-611.
- Hosseini A and Rajabian A. 2016. Protective effect of *Rheum turkestanicum* root against doxorubicin-induced toxicity in H9c2 cells. *Revista Brasileira de Farmacog*, 26: 347-351.
- Hosseinzadeh H, Sadeghnia HR, Ziaee T, Danaee A. 2005. Protective effect of aqueous saffron extract (*Crocus sativus* L.) and crocin, its active constituent, on renal ischemia-reperfusion-induced oxidative damage in rats. *J Pharm Pharm Sci*, 8: 387-393.
- Huang Y, Cheng S and Lin T. 1996. Lipid peroxidation in rats administrated with



## *Rheum turkestanicum* root against mercuric chloride toxicity

- mercuric chloride. *Biol Trace Element Res*, 52: 193.
- Kalender S, Uzun FG, Demir F, Uzunhisarcikli M, Aslanturk A. 2013. Mercuric chloride-induced testicular toxicity in rats and the protective role of sodium selenite and vitamin E. *Food Chem Toxicol*, 55: 456-462.
- Li X, Zhang J, Liu W, Li X, Zhang X, Jiang Y, Zhou J, Jin Y. 2011. Serum levels of perfluorinated compounds in the general population in Shenzhen, China *Chinese Sci Bull*, 56: 3092-3099.
- Linden A, Gülden M, Martin H-J, Maser E, Seibert H. 2008. Peroxide-induced cell death and lipid peroxidation in C6 glioma cells. *Toxicol in Vitro*, 22: 1371-1376.
- Liu H, Gu LB, Tu Y, Hu H, Huang YR, Sun W. 2016. Emodin ameliorates cisplatin-induced apoptosis of rat renal tubular cells in vitro by activating autophagy. *Acta Pharmacol Sin*, 37: 235-245.
- Lott JA and Turner K. 1975. Evaluation of Trinder's glucose oxidase method for measuring glucose in serum and urine. *Clin Chem*, 21: 1754-1760.
- Mahboob M, Shireen KF, Atkinson A, Khan AT. 2001. Lipid peroxidation and antioxidant enzyme activity in different organs of mice exposed to low level of mercury. *J Environ Sci Health, Part B* 36: 687-697.
- Masson P, Ohlsson P and Bjorkhem I. 1981. Combined enzymatic – Jaffe's method for determination of creatinine in serum. *Clin Chem*, 27: 18-21.
- McElderry L, Tarbit I and Cassells-Smith A. 1982. Six methods for urinary protein compared. *Clin Chem*, 28: 356-360.
- Miller DM, Lund BO and Woods JS. 1991. Reactivity of Hg (II) with superoxide: evidence for the catalytic dismutation of superoxide by Hg(II). *J Biochem Toxicol*, 6: 293-298.
- Moraes-Silva L, Siqueira LF, Oliveira VA, Oliveira CS, Ineu RP, Pedrosa TF, Fonseca MM, Pereira ME. 2014. Preventive effect of CuCl<sub>2</sub> on behavioral alterations and mercury accumulation in central nervous system induced by HgCl<sub>2</sub> in newborn rats. *J Biochem Mol Toxicol*, 28: 328-335.
- Nava M, Romero F, Quiroz Y, Parra G, Bonet L, Rodríguez-Iturbe B. 2000. Melatonin attenuates acute renal failure and oxidative stress induced by mercuric chloride in rats. *Am J Physiol Renal Physiol*, 279: F910-918.
- Nogueira CW, Soares FA, Nascimento PC, Muller D, Rocha JB. 2003. 2, 3-Dimercaptopropane-1-sulfonic acid and meso-2, 3-dimercaptosuccinic acid increase mercury- and cadmium-induced inhibition of delta-aminolevulinatase. *Toxicol* 184: 85-95.
- Oda SS and El-Ashmawy IM. 2012. Protective effect of silymarin on mercury-induced acute nephro-hepatotoxicity in rats. *Glob Vet*, 9: 376-383.
- Patrick L. 2002. Mercury toxicity and antioxidants: Part 1: role of glutathione and alpha-lipoic acid in the treatment of mercury toxicity. *Altern Med Rev*, 7: 456-471.
- Pillai A and Gupta S. 2005. Antioxidant enzyme activity and lipid peroxidation in liver of female rats co-exposed to lead and cadmium: effects of vitamin E and Mn<sup>2+</sup>. *Free Radic Res*, 39: 707-712.
- Rozgaj R, Kasuba V and Blanus M. 2005. Mercury chloride genotoxicity in rats following oral exposure, evaluated by comet assay and micronucleus test. *Arh Hig Rada Toksikol*, 56: 9-15.
- Şener G, Şehirli AÖ and Ayanog˘lu-Dülger G. 2003. Melatonin Protects against mercury (II) -induced oxidative tissue damage in rats. *Pharmacol Toxicol*, 93: 290-296.
- Sharma MK, Sharma A, Kumar A, Kumar M. 2007. *Spirulina fusiformis* provides protection against mercuric chloride induced oxidative stress in Swiss albino mice. *Food Chem Toxicol*, 45: 2412-2419.
- Sridhar MPN, Nandakumar N, Rengarajan T, Balasubramanian MP. 2013. Amelioration of mercuric chloride induced oxidative stress by *Hygrophila auriculata* (K. Schum) Heine via modulating the oxidant-antioxidant imbalance in rat liver. *J Biochem Technol*, 4: 622-627.
- Stohs S and Bagchi D. (1995) Oxidative mechanisms in the toxicity of metal ions. *Free Radic Biol Med*, 18: 321-336.
- Tanaka-Kagawa T, Suzuki M, Naganuma A, Yamanaka N, Imura N. 1998. Strain difference in sensitivity of mice to renal toxicity of inorganic mercury. *J Pharmacol Exp Ther*, 285: 335-341.
- Van Acker SA, Tromp MN, Griffioen DH, Van Bennekom WP, van der Vijgh WJ, Bast A. 1996. Structural aspects of antioxidant

- activity of flavonoids. *FreeRadic Biol Med*, 20: 331-342.
- Zalups RK. 2000. Molecular interactions with mercury in the kidney. *Pharmacol Rev*, 52: 113-144.
- Zhang R, Kang KA, Piao MJ, Lee KH, Jang HS, Park MJ, Kim BJ, Kim JS, Kim YS, Ryu SY, Hyun JW. 2007. Rhapontigenin from *Rheum undulatum* protects against oxidative-stress-induced cell damage through antioxidant activity. *J Toxicol Environ Health A*, 70: 1155-1166.
- Zhen-kui Q, Zhuo-ran Z, Li-zhi T, WANG K, ZHANG R. 2014. Protective effect of emodin on ischemia reperfusion injury of kidney autotransplantation. *Drug and Clin.*